

MT. COLUMBUS SCHOOL
Dakshinpuri, New Delhi – 62

HOLIDAY HOMEWORK (WINTER VACATION)

SESSION: 2018-19

CLASS- VIII

- ❖ Do all the questions on A4 size sheet.

ENGLISH



Q1. Look at the given picture and answer the following questions:

- What does the picture shows?
- What kind of lifestyle does it show?

Q2. Make a Diary Entry for five consecutive days.

हिन्दी

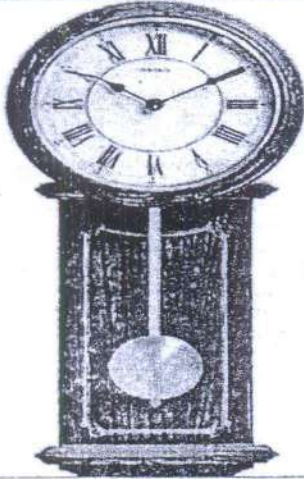
- गाँव की बोली में कई शब्दों का उच्चारण अलग होता है। उनकी वर्तनी भी बदल जाती है। जैसे—गवरइया गौरैया का ग्रामीण उच्चारण है। इसी तरह के बीस शब्द खोजकर लिखिए।
- मान लीजिए आपकी मुलाकात किसी दूसरे ग्रह के निवासी से हो जाती है, तो आप उससे क्या बात करेंगे? संवादात्मक रूप में लिखिए।

संस्कृत

- एकां घटनां लिखतु यदा भवान्/भवती बहु अधिकम् अहसत्।
- 'ल्यप्' और 'क्त्वा' प्रत्यय प्रयोजयित्वा दश शब्दान् लिखत।
- कोऽपि पंच श्लोकान् लिखित्वा कंठस्थ कुरु।

MATHEMATICS

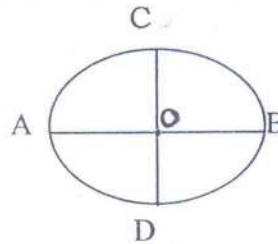
knowledge byte



Planck time is the name given to the smallest known unit of time. It's a little confusing but it measures the amount of time it takes light to travel 1 Planck length (a distance so small that it can't even be measured!). Named after Max Planck, who was the first to propose it, Planck time is defined as theoretically, this is the smallest time measurement that will be possible — roughly 10^{-43} seconds.

ACTIVITY I

- Refer to the circular clock in above activity.
- Cut out the circle and fold it such that the two parts overlap each other completely. Again fold it in same way into 4 parts to obtain a crease. Now open the folds. The point of intersection 'O' of the creases is the centre of the circle.



- Q1. Measure the distance OA and OB. What do you observe?
- Q2. Define circle on the basis of above observation.
- Q3. A line segment whose end points lie on circle is known as.....
- Q4. How many such line segments are possible in a circle?
- Q5. What is the name given to such a longest line segment in the circle?

ACTIVITY II

Prove that sum of interior angles of a quadrilateral is 360° (you can prove this dividing it into two triangles). Do it in activity file.

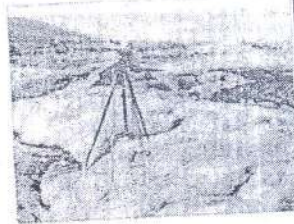
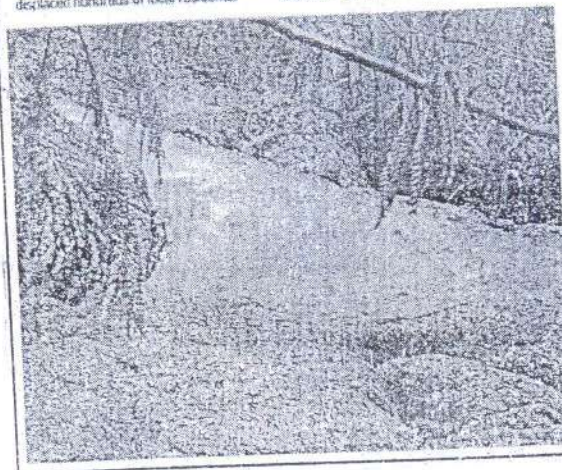
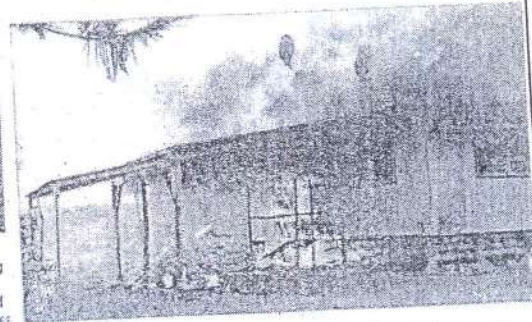
SCIENCE

Creeping danger



Lava flow from the Kilauea Volcano inches closer to human settlement near the town of Pahoa on the Big Island of Hawaii on Monday. The volcano, which erupted on June 27, incinerated several houses, and displaced hundreds of local residents.

AGENCIES

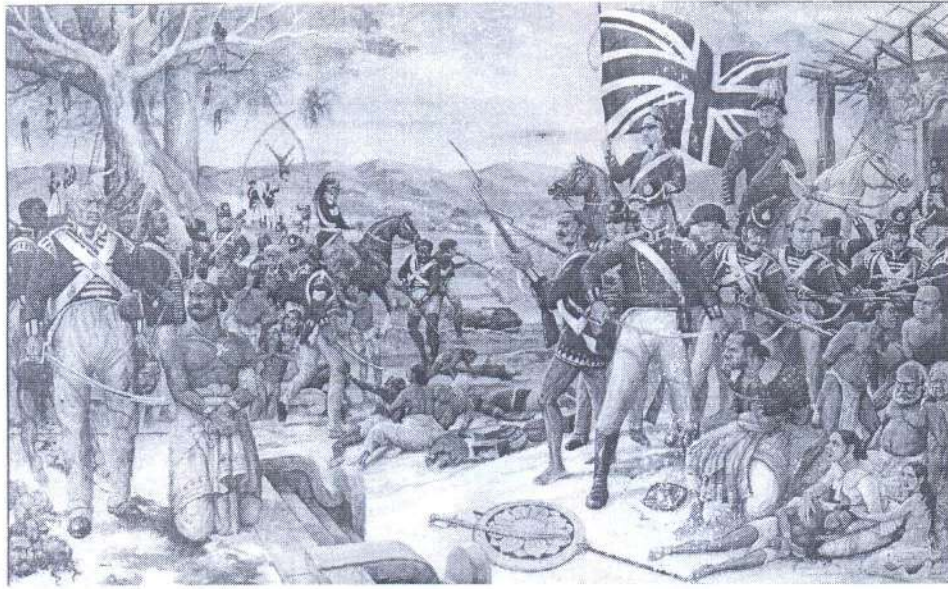


➤ Answer the following questions:

1. Name the natural phenomenon which cannot be predicted accurately even now?
2. What is an earthquake?
3. What happens when it occurs? List three states in India where earthquakes are more likely to happen.
4. Can earthquake cause volcanic eruption?
5. Why don't all earthquakes have similar patterns?
6. What are landslides and tsunamis?
7. What is a seismic zone? Why it is also called fault zone?
8. Can a seismograph help in prediction of earthquakes and volcanic activity?
9. What building technology is currently I use for making homes in earthquake prone areas? Can the same be done to save guard against volcanic eruption?
10. What is lava? Why is it followed by flash?

SOCIAL SCIENCE

Do all the activities in your Social –Science File.



1. Look at the given picture and answer the following questions:
 - a. In what ways are the Indian portrayed in the picture?
 - b. What do you think the picture conveys?
 2. Find out the density of population, birth rate and death rate of the metropolitan cities of India and compare them with that of your city.
 3. Mark on the map of India the Indian provinces and princely states before 14 August 1947.
-